

## **“Wicked” star Kerry Ellis celebrates the Great British Songbook**

Kerry Ellis, one of the West End's biggest musical theatre stars, is to headline a series of concerts celebrating great British music from the worlds of theatre, film and pop.

The Great British Songbook Series at the 400-seat Shaw Theatre, will feature stunning new arrangements of well known and some more novel works by many of our leading composers and lyricists, including Noel Coward, Lionel Bart, Anthony Newley, John Barry, Don Black, John Lennon, Paul McCartney, Andrew Lloyd Webber, Tim Rice, Kate Bush and Queen.

“Kerry Ellis Celebrates The great British Songbook” is on Saturday and Sunday June 20 & 21 when the sensational singer who finally hangs up her witch's broomstick as Elphaba in “Wicked” after playing the role in London and on Broadway in May.

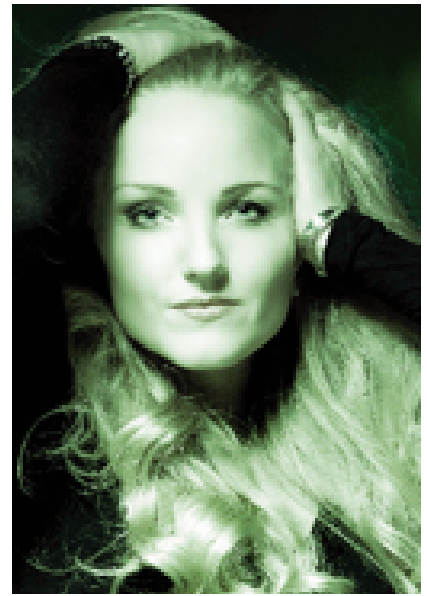
More concerts with major singers will be announced throughout 2009 in this special Great British Songbook season, devised by Neil Marcus.

**Kerry Ellis** created the role of Meat in the original London cast of the Queen/Ben Elton musical “We Will Rock You” at the Dominion Theatre and took part in the Queen's Golden Jubilee Concert at Buckingham Palace. She played Svetlana in “Chess In Concert” at the Royal Albert Hall opposite Josh Groban, Adam Pascal and Marti Pellow; Fantine in “Les Misérables” at the Queen's Theatre; Ellen in the national tour of “Miss Saigon” and appeared in Trevor Nunn's production of “My Fair Lady” at the National Theatre and Drury Lane, playing Eliza Dolittle opposite Jonathan Pryce on many occasions. Earlier this year she released her debut CD recording “Wicked In Rock”, produced by Brian May. Most recently, Kerry sang “Defying Gravity” on the 2008 Royal Variety Performance with Briana May and Rufus Taylor. Kerry has just returned to the role of Elphaba in the London production of “Wicked”, having played the role for the past six months at the Gershwin Theatre on Broadway.

**Press contact: Kevin Wilson (07884 368697) kevin@cloutcom.co.uk**

### **CLOUT COMMUNICATIONS LTD**

79 Wardour Street London W1D 6QD tel: 020 7851 8625 e.mail:info@cloutcom.co.uk www.cloutcom.co.uk



**“Kerry Ellis has the extraordinary ability to take on a part and make you think no-one else could ever have played it as well.**

**It is only a matter of time until she gets to create a role and makes it her own forever.”**

Cameron Mackintosh  
December 19, 2008

**“Kerry Ellis makes me excited about the future of Musical theatre.”**

Baz Bamigboye, Daily Mail  
December 17, 2008

## **LISTINGS INFO**

### **KERRY ELLIS CELEBRATES THE GREAT BRITISH SONGBOOK**

#### **SHAW THEATRE**

11- 110 Euston Road  
London NW1 2AJ

Saturday 20, Sunday 21  
June at 8.00pm

**Press Night:**  
Saturday 20 June at 8.00pm

**Box office:**  
**0871 594 3123**

[www.theshawtheatre.com](http://www.theshawtheatre.com)

**Tickets:**  
£12.50 - £40.00